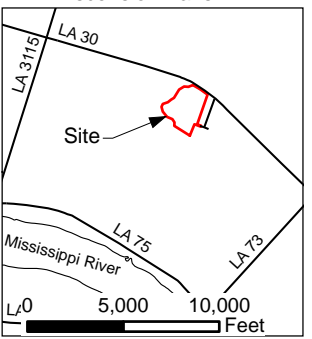
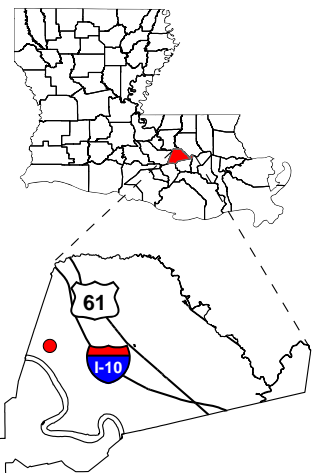


Exhibit R. Gateway II Site Local Product Pipeline Infrastructure Maps

Project:
Site Exhibit for
Gateway II
Ascension Parish, LA

Client:
Superstar Holding, LLC



- Legend:
- State Roads
 - Parish Roads
 - 20" LA Gas Line
 - 4" Propylene
 - 6" Ethane
 - Servitude
 - Site Boundary



Source:
GIS features acquired from public domain
state and federal data sources
(GNIS, LOSCO, US Census Bureau).

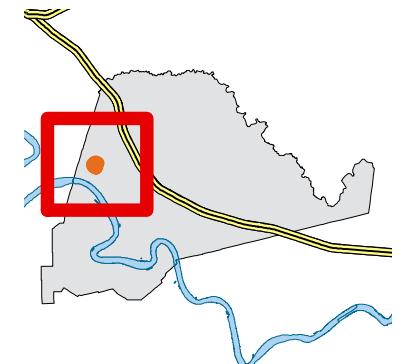
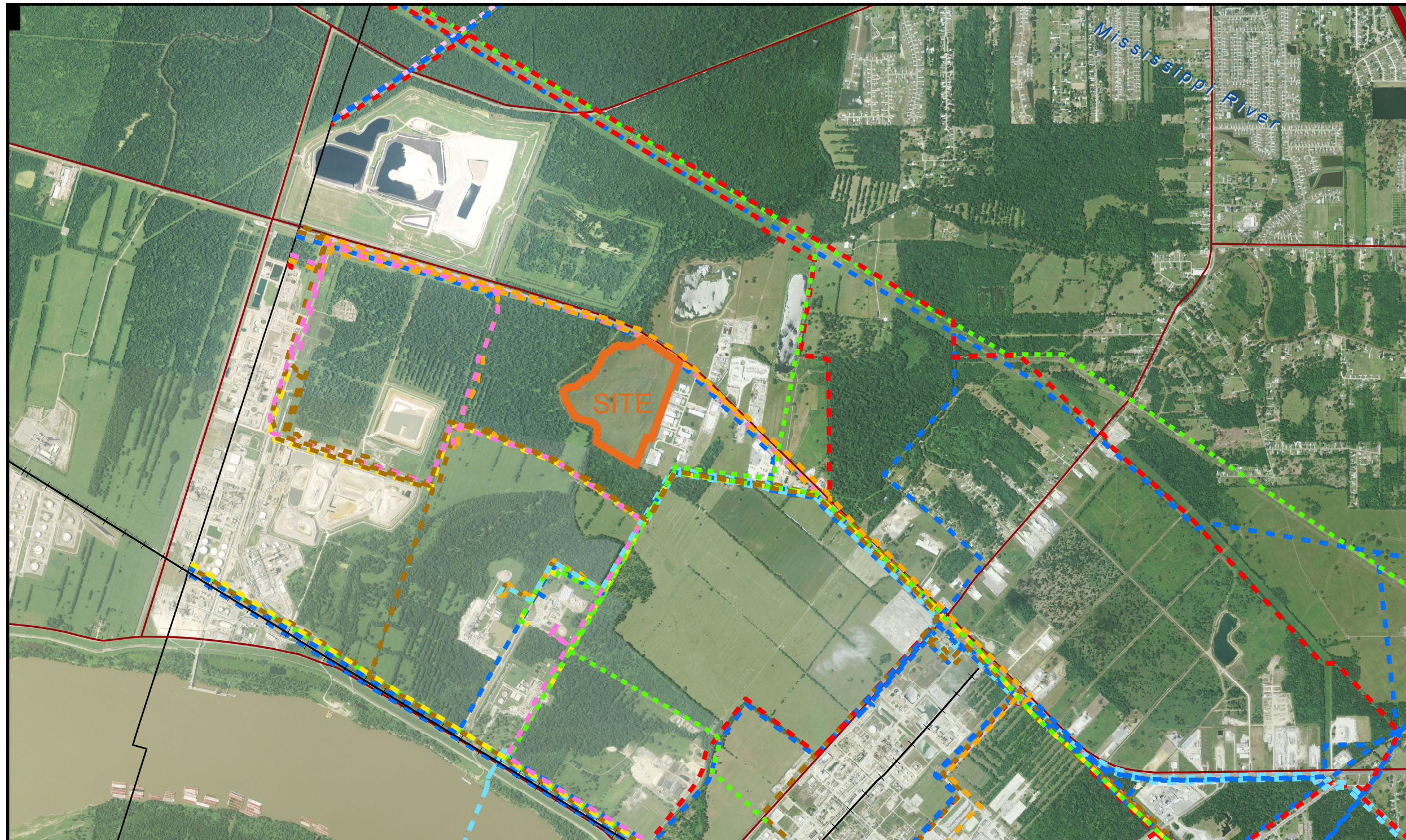
Date:	4/3/2013
Project Number:	28015
Drawn By:	JAY
Checked By:	TMG

CSRS
IMAGINE SHAPE DELIVER
6767 Perkins Road Suite 200 Baton Rouge, LA 70808
Telephone: 225 769-0546 Fax: 225 767-0060
www.csrsonline.com



P:\28015(Survey)\Drawings\Gateway Site Exhibits\GATEWAY II Site Servitude.mxd

Exhibit R. Gateway II Site Local Product Pipeline Infrastructure Maps



- Site Boundary
- Interstates
- Railroad
- Highways
- AMMONIA
- BUTANE
- CARBON DIOXIDE
- ETHANE
- ETHYLENE
- HYDROGEN
- NATURAL GAS
- NATURAL GAS LIQUIDS
- PROPANE
- PROPYLENE

Source:
 -ESRI and US Census
 -Aerial Imagery: 2010 NAIP
 -Pipelines: NPMS 2012
 -Powerlines: HTSI 2012
 Location Boundries are approximated
 GIS Analyst: MDT 03/14/2013



0 0.5 1 2 Miles

Mapping conducted by:
 Louisiana Economic Development
 Business Intelligence
 1051 N Third St
 Baton Rouge, Louisiana 70802
 (225) 342-3725
 OpportunityLouisiana.com