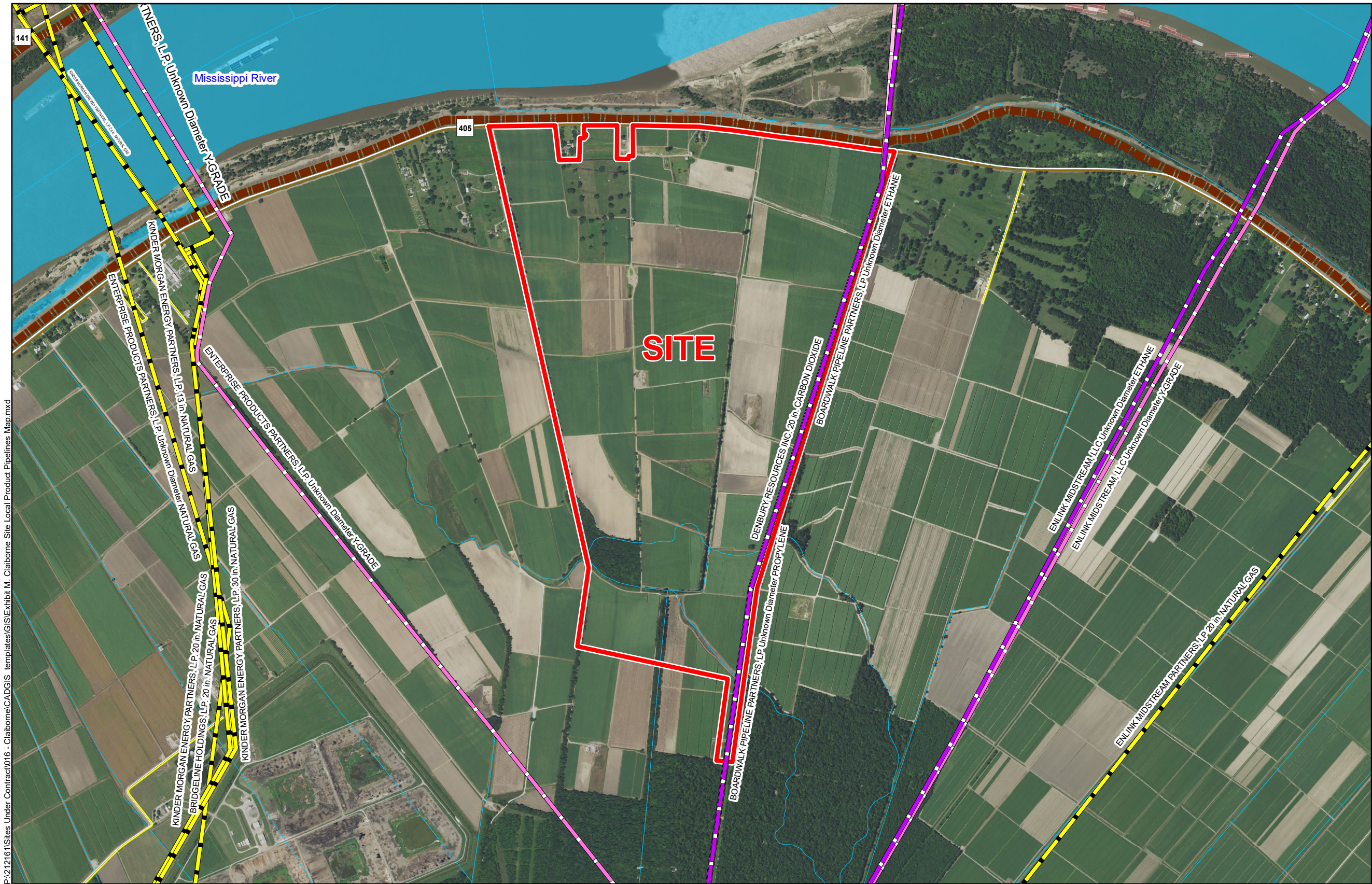
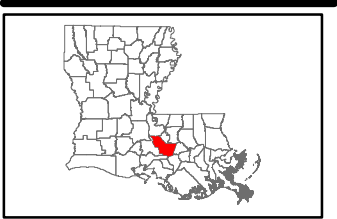


# Exhibit M. Claiborne Site Local Product Pipelines Map



Local Product Pipelines  
Claiborne Site  
Iberville Parish, LA

BRAC



Iberville Parish

LEGEND


- Site Boundary (926.93 Ac. +/-)
- Pipeline Commodity
  - CARBON DIOXIDE
  - ETHANE
  - NATURAL GAS
  - PROPYLENE
  - Y-GRADE
- Existing Roadway
  - Rural State Highway
  - Local Roads
- Levee
- Stream
- Waterbody

P:\212161\Sites Under Contract\016 - Claiborne\CAD\GIS templates\GIS\Exhibit M. Claiborne Site Local Product Pipelines Map.mxd

- General Notes:
1. No attempt has been made by CSRS, Inc. to verify site boundary, title, actual legal ownership, deed restrictions, servitudes, easements, or other burdens on the property, other than that furnished by the client or his representative.
  2. Transportation data from 2013 TIGER datasets via U.S. Census Bureau at <ftp://ftp2.census.gov/geo/tiger/TIGER2013>.
  3. Pipeline information from IHS, Inc. and is current as of 06/2015. Product types in individual lines can vary and products represented here are current as of the publication of this exhibit, but may change depending on the demands and requirements of each system. Exact field location has not been determined by survey. The lines shown are an approximate representation only and may have been offset for depiction purposes.
  4. 2015 aerial imagery from USDA-APFO National Agricultural Inventory Project (NAIP) and may not reflect current ground conditions.



Scale 1:20,000  
0 1,000 2,000 Feet

 Baton Rouge Area Chamber.

Date:	10/10/2016
Project Number:	212161
Drawn By:	AMB
Checked By:	JAY

 CSRS  
IMAGINE SHAPE DELIVER

6767 Perkins Road Suite 200 Baton Rouge, LA 70808  
Telephone: 225 769-0546 Fax: 225 767-0060  
[www.csrsonline.com](http://www.csrsonline.com)