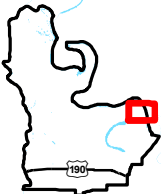


Exhibit S. Moseley North Site US Geological Survey Quad Map


USGS Topographic Map
Moseley North Site
Pointe Coupee Parish, LA

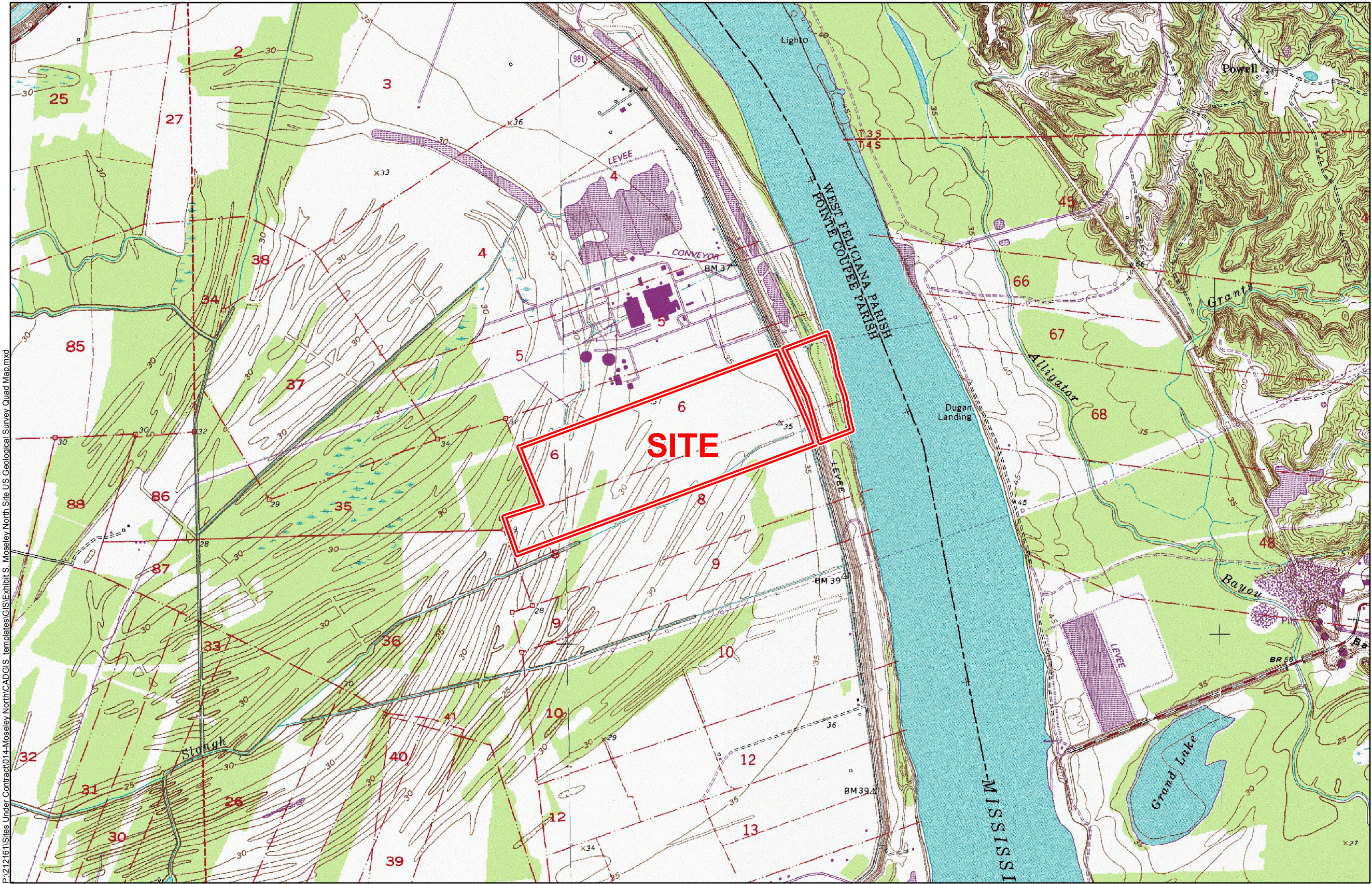
BRAC



Pointe Coupee Parish

LEGEND

 Site Boundary
(304.24 Acres +/-)



P:\212161\Sites Under Contract\014-Moseley North\GIS\Exhibit S. Moseley North Site US Geological Survey Quad Map.mxd

General Notes:
1. No attempt has been made by CSRS, Inc. to verify site boundary, title, actual legal ownership, deed restrictions, servitudes, easements, or other burdens on the property, other than that furnished by the client or his representative.
2. Topo data and symbologies from USDA NRCS site <http://datagateway.nrcs.usda.gov/GDGOrder.aspx> as created by USDA/NRCS National Geospatial Center of Excellence "USDA-NRCS-NCGC Digital Raster Graphic MrSID Mosaic".
3. Parcel information taken from Pointe Coupee Parish Assessor GIS data provided by BRAC. **Parcels in the Site are: 00305521, 00299065, 00299083, 00305514, and 00305530. Site size is approximately 326.71 Acres +/-.**



Scale 1:24,000
0 1,250 2,500 Feet



Date: 8/10/2015
Project Number: 212161.20.014
Drawn By: MAT
Checked By: TMG

CSRS
IMAGINE SHAPE DELIVER

6767 Perkins Road Suite 200 Baton Rouge, LA 70808
Telephone: 225 769-0546 Fax: 225 767-0060
www.csrsonline.com