

# Exhibit S. Claiborne Site Soils Conservation Service Map

NRCS Soils Map  
Claiborne Site  
Iberville Parish, LA

BRAC



Iberville Parish

LEGEND

Site Boundary (926.93 Ac. +/-)

See Soil Report for Definitions

Existing Roadway

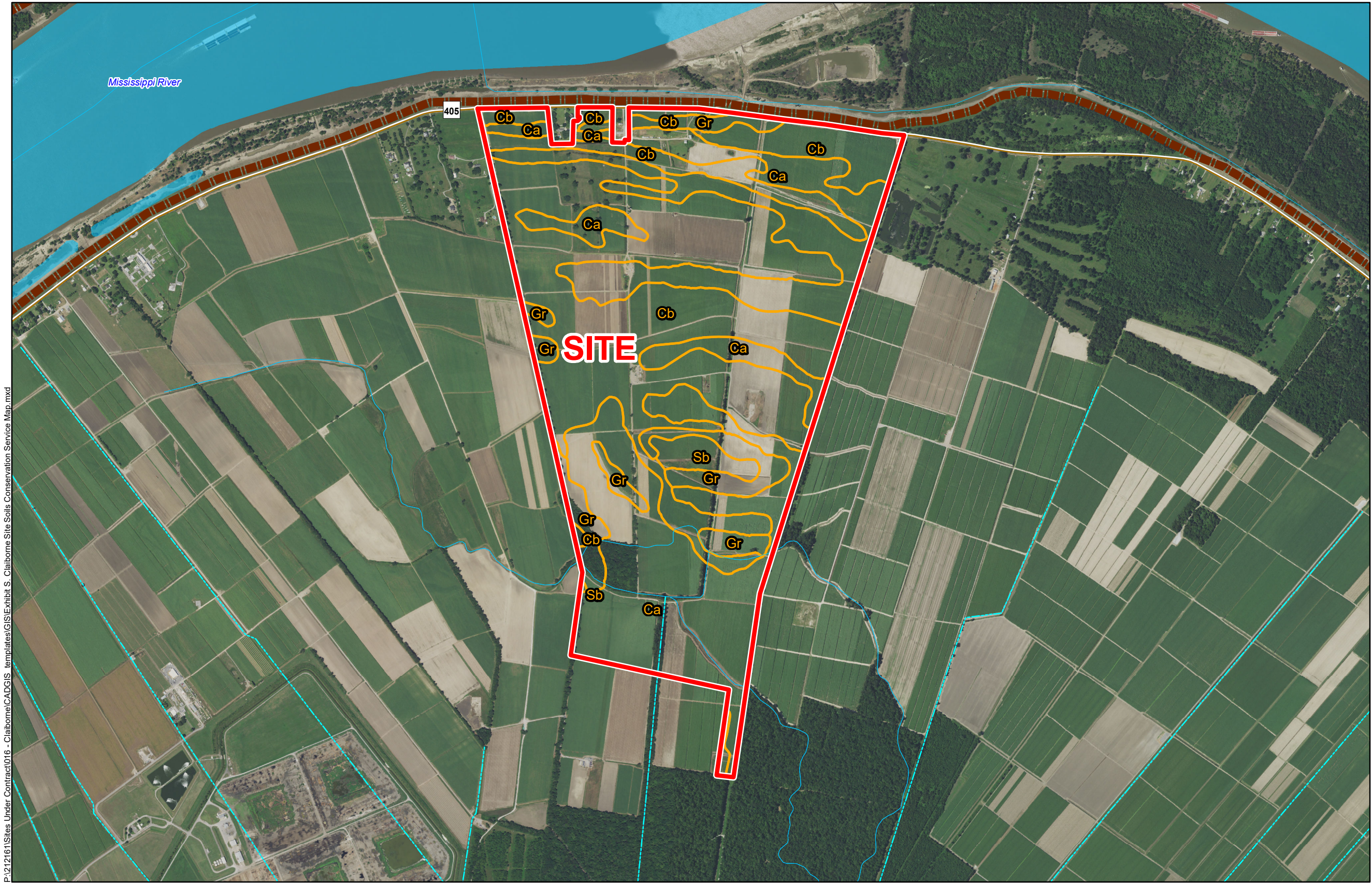
Rural State Highway

Levee

Canal or Ditch

Stream or River

Waterbody



P:\212161\Sites Under Contract\016 - Claiborne\CAD\GIS templates\GIS\Exhibit S. Claiborne Site Soils Conservation Service Map.mxd

## General Notes:

1. No attempt has been made by CSRS, Inc. to verify site boundary, title, actual legal ownership, deed restrictions, servitudes, easements, or other burdens on the property, other than that furnished by the client or his representative.
2. Transportation data from 2013 TIGER datasets via U.S. Census Bureau at [ftp2.census.gov/geo/tiger/TIGER2013](http://ftp2.census.gov/geo/tiger/TIGER2013).
3. Soils data from USDA SSURGO website: <http://websoilsurvey.sc.egov.usda.gov/App/WebSoilSurvey.aspx>.
4. 2015 aerial imagery from USDA-APFO National Agricultural Inventory Project (NAIP) and may not reflect current ground conditions.



Scale 1:19,000

0 1,000 2,000 Feet



Date: 10/10/2016

Project Number: 212161

Drawn By: AMB

Checked By: JAY

CSRS  
IMAGINE SHAPE DELIVER

6767 Perkins Road Suite 200 Baton Rouge, LA 70808  
Telephone: 225 769-0546 Fax: 225 767-0060  
[www.csrsonline.com](http://www.csrsonline.com)