

# Exhibit 21 - Louisiana State Historic Preservation Office Response to Potential Interference with Historic Sites

**From:** [Shirley Lang](#)  
**To:** [DCRT Section 106](#)  
**Subject:** FW: Jena Industrial Site - SHPO Decision  
**Date:** Tuesday, January 12, 2016 10:56:12 AM  
**Attachments:** [Exhibit 21 - Louisiana State Historic Preservation Office Response to Potential Interference with Historic Sites.pdf](#)  
[Exhibit 18 - Aerial Site Map.pdf](#)

---

---

**From:** Dillehay, Jacob [mailto:Jacob.Dillehay@MMLH.com]  
**Sent:** Friday, January 08, 2016 8:10 AM  
**To:** Pam Breaux  
**Subject:** Jena Industrial Site - SHPO Decision

Mrs. Breaux,

You completed this review for me on a proposed site in Jena, LA back in January of last year. Since that time the LaSalle Economic Development District has purchased an additional 10 Acres directly to the west of the site you reviewed last January. I have attached an aerial site map for reference. The site on the east side is the site you originally reviewed. The site on the west site is the nearly purchased site.

My questions is does this addition to the site change your prior decision on the property?

Thank you,

Jacob

**Jacob Dillehay, E.I.**  
**Meyer, Meyer, LaCroix, & Hixson**  
100 Engineer Place  
Alexandria, Louisiana 71303  
Phone: (318) 448-0888  
Fax: (318) 448-0885

No known historic properties will be affected by this undertaking. This effect determination could change should new information come to our attention.



Phil Boggan  
Deputy State Historic Preservation Officer

Date

02/12/2016
------------



Meyer, Meyer, LaCroix & Hixson  
Engineers and Land Surveyors

100 Engineer Place  
Alexandria, Louisiana 71303  
Ph: (318) 448-0888  
Fax: (318) 448-0885  
www.mmlh.com  
mmlh@mmlh.com

December 17, 2014

Ms. Pam Breaux  
State Historic Preservation Office  
Office of Cultural Development  
State Department of Culture, Recreation and Tourism  
P.O. Box 44247  
Baton Rouge, LA 70804-4247

No known historic properties will be affected by this undertaking. This effect determination could change should new information come to our attention.

*Pam Breaux*

1-22-15

Pam Breaux  
State Historic Preservation Officer

Date

Re: Louisiana Economic Development (LED) Site Certification Program  
LaSalle Economic Development District Industrial Site  
LaSalle Parish, Louisiana  
Potential Impacts to Historical and Cultural Resources  
MML&H File No.: 016-6848

Dear Ms. Breaux:

The LaSalle Parish Economic Development District intends to certify its existing site for industrial development through the LED Site Certification Program in LaSalle Parish. The comments of your agency are required as a prerequisite to completing the LED Site Certification Form.

The attached map shows the location of the LaSalle Economic Development District's proposed industrial site, which is located to the southwest of the Town of Jena, adjacent to the Jena Airport.

The LaSalle Economic Development District requests input from your agency regarding potential impacts that industrial land development of the site shown may have on historic sites, cultural and/or archaeological resources.

Please contact me at (318) 448-0888 or by email at [jacob.dillehay@mmlh.com](mailto:jacob.dillehay@mmlh.com), if you have any questions or need any additional information.

Sincerely,

Jacob Dillehay, E.I.

RECEIVED

JD:pp

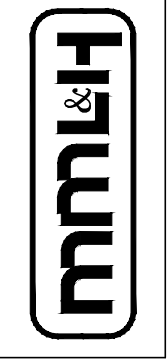
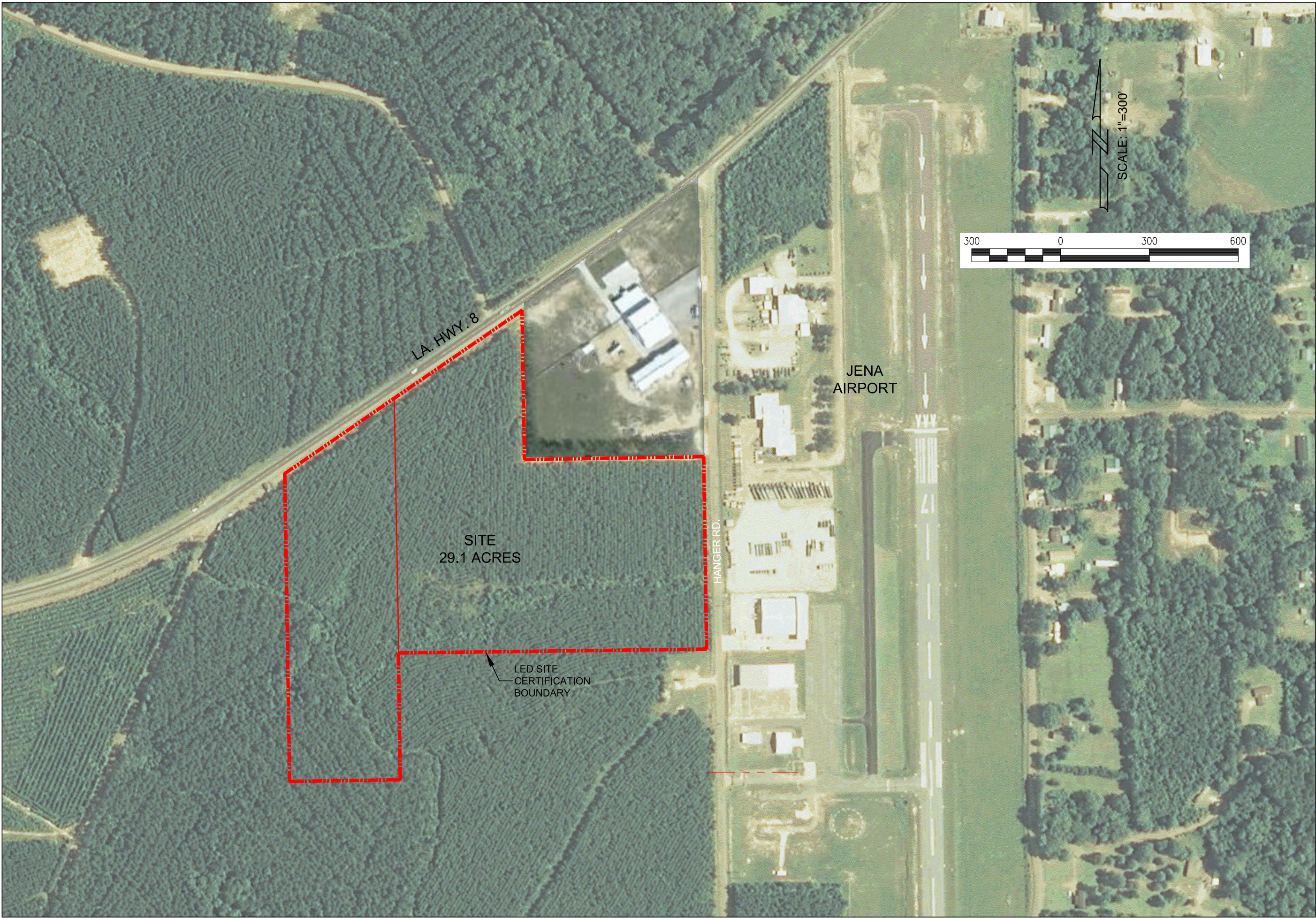
DEC 22 2014

Enclosures

ARCHAEOLOGY

Alexandria, La. • Ruston, La.





Meyer, Meyer, LaCroix & Hixson  
Engineers & Land Surveyors  
100 Engineer Place, Alexandria, LA 71303  
Phone: (318) 448-0888 - Fax: (318) 448-0885

ALEXANDRIA - RUSTON

LOUISIANA ECONOMIC DEVELOPMENT  
LSALLE ECONOMIC DEVELOPMENT DISTRICT

AERIAL SITE MAP

PROJECT NO. 6848  
DATE: DEC. 2015  
DESIGNED BY: MMLH  
CHECKED BY: MMLH  
DRAWN BY: MMLH  
CHECKED BY: MMLH

EXHIBIT  
18