

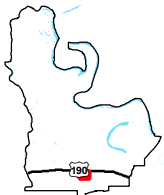
Exhibit S. Woodley Site Soils Conservation Service Map



Woodley Site Soils Conservation Service Map

NRCS Soils Map
Woodley Site
Pointe Coupee Parish, LA

BRAC

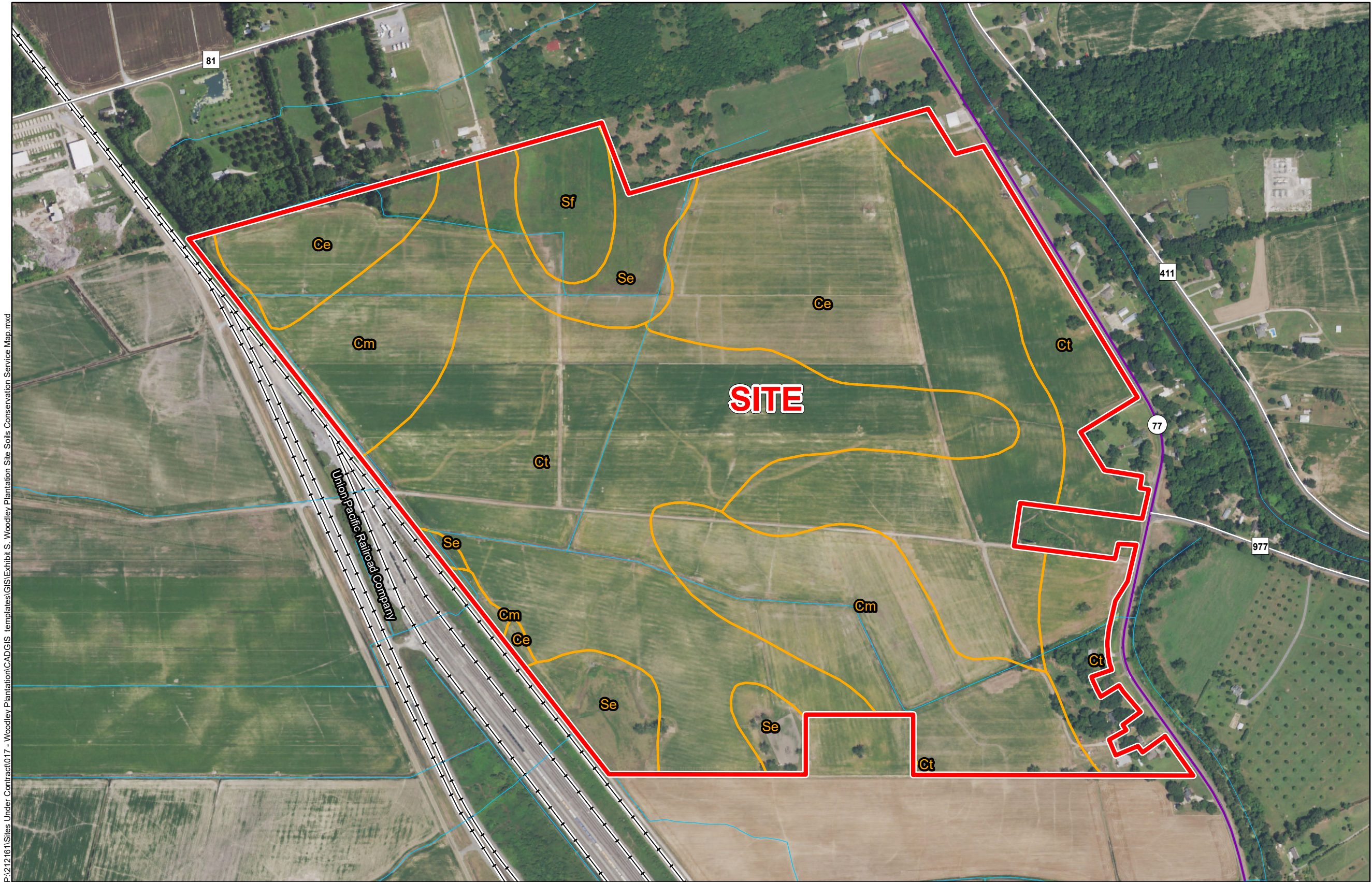


Pointe Coupee Parish

LEGEND

- Site Boundary (341.42 Ac. +/-)
- See Report for Definitions
- Existing Roadway**
 - Urban State Highway
 - Rural State Highway
 - Existing Railroad
 - Stream or River

P:\212161\Sites Under Contract\017 - Woodley Plantation\CAD\GIS templates\GIS\Exhibit S. Woodley Plantation Site Soils Conservation Service Map.mxd



General Notes:

1. No attempt has been made by CSRS, Inc. to verify site boundary, title, actual legal ownership, deed restrictions, servitudes, easements, or other burdens on the property, other than that furnished by the client or his representative.
2. Transportation data from 2013 TIGER datasets via U.S. Census Bureau at ftp2.census.gov/geo/tiger/TIGER2013.
3. Soils data from USDA SSURGO website: <http://websoilsurvey.sc.egov.usda.gov/App/WebSoilSurvey.aspx>.
4. 2015 aerial imagery from USDA-APFO National Agricultural Inventory Project (NAIP) and may not reflect current ground conditions.



Scale 1:7,000
0 375 750 Feet



Date: 6/24/2016
Project Number: 212161
Drawn By: AMB
Checked By: JAY

CSRS
IMAGINE SHAPE DELIVER
6767 Perkins Road Suite 200 Baton Rouge, LA 70808
Telephone: 225 769-0546 Fax: 225 767-0060
www.csrsonline.com